



THE HAWTHORNS PRIMARY SCHOOL



ASPIRATIONAL QUALITY: **KINDNESS**

EMOTION OF THE WEEK: **Excited**

THEME : **Kindness**

AIM: **Consider the importance of being kind and the difference that kindness can make to people's lives.**



With the busy pace of life these days and the demands on our time it is easy to miss pieces of information and news of what's happening in the school.

The weekly bulletin is the school's regular form of communication and a good way to keep up-to-date with all that goes on at school. It only takes a few minutes to read and is also available on the school website, our Facebook page is also updated regularly with important information.



Clubs will begin week commencing 11th September. If you have not yet booked your child/children onto a club, please contact the school office.

IMPORTANT DATES

SEPTEMBER

Monday 11th	Clubs start
Monday 11th	Y6 Meet the Teacher at 3.45pm
Tuesday 12th	Y1 Meet the Teacher at 3.45pm
Tuesday 12th	Y2 Meet the Teacher at 4.30pm
Wednesday 13th	EYFS Meet the Teacher at 3.45pm
Wednesday 13th	Y3 Meet the Teacher at 4.30pm
Thursday 14th	Y4 Meet the Teacher at 3.45pm
Thursday 14th	Y5 Meet the Teacher at 4.30pm

OCTOBER

Thursday 5th	Census Day
Thursday 5th	Cross Country at Blue Coat
Tuesday 10th	Individual photos
Friday 13th	PTA School Discos
Monday 16th	Y3 Butser Farm Trip
Tuesday 17th	PTA AGM (wine and cheese night TBC)
Wednesday 18th	Parents Evening Face-to-face
Thursday 19th	Parents Evening Virtual
Friday 19th	INSET DAY
Monday 23rd to Friday 27th	OCTOBER HALF TERM

[\(Please click here to refer to the school website for our full Academic Term dates\)](#)



REMINDERS



TURNING CIRCLE & PARKING

As we start the new term we would ask all parents to be considerate when parking near the school and to respect the access areas and property of local residents.

No parking is allowed on the ZIG-ZAG area or in front of the Emergency access gates. Please also remember that traffic using the school's 'turning circle' should keep flowing at all times with **no stopping** to drop off/pick up children. For the safety of everyone on site, your support is most appreciated.

The Turning Circle is provided to enable you to safely turn around without having to make a three-point turn in Northway or other local roads.

Three point turns, **especially on Northway**, are an incredibly dangerous manoeuvre, putting pedestrians at risk and we hope you will all take this message on board.

Thank you.



Please update Arbor with any changes to contact details, including details of those who collect your child/children from school on a regular basis.



If your child is going home with someone else that day, PLEASE can you let the office know, in writing, before 11.00am. Thank you



If your child is required to attend an appointment inside school hours, please can we ask you email the office a copy of the appointment confirmation in order for us to authorise the leave.

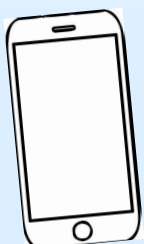


Please be aware that dogs are not allowed in the Front or Back playgrounds.

(Puppies in arms are excluded from this, provided they are not causing distress to anyone)

Also, please be mindful when standing at the gates that some children & adults are nervous around dogs, please keep them on a tight leash away from everyone.

Thank you.





We are extremely lucky to have a very active and successful PTA Committee at The Hawthorns School. Please check this space each week for news and updates of upcoming events and fundraising opportunities.

PTA@hawthorns.wokingham.sch.uk



To report absences, please email absence@hawthorns.wokingham.sch.uk

All other enquiries, please email office@hawthorns.wokingham.sch.uk

<http://www.hawthorns.wokingham.sch.uk/website/home>